



THE NETTLE AND DOCK SCARBOROUGH LITERACY PROJECT

Back to School

September 2023 is an exciting time for many children across the country who are getting ready for the new school year, looking forward to seeing their friends and teachers, with stories of all the fun they have had over the summer, and many go on to learn and succeed throughout the year.

Sadly, for half a million children in the UK, school is a difficult and frustrating experience because their reading is below the expected level for their age: research by the National Literacy Trust has found that these children do not have a single book of their own at home and are six times less likely to be able to read at the expected level for their age. Not being able to read as well as the rest of the class becomes a significant long-term disadvantage across all subjects. These children from deprived households fall behind in their work and develop damagingly low aspirations and sense of self-worth. For these children, starting back at school is a distressing time.

Here's where you come in. Sacha and Thomas have launched the Nettle and Dock literacy project in Eastfield Scarborough, to get books into the hands of the children who need it most and bring literacy to life using live music, performance, and craft! With your support through 'GoFundMe' we can boost the literacy skills of children living in our most economically disadvantaged community, giving them a better chance of success in school and work.

"The class absolutely LOVED the reading of your wonderful story and were captivated by your illustrations...especially blowing the dandelion clock and the dewy grass!" –Teacher, Leavening Primary School, North Yorkshire

"The children were all engaged throughout. There were many children putting their hands up at all ages to ask questions and make inferences. During the songs the whole school were singing along and doing the actions. When we returned to the classroom, my class aged 8-10 years old, discussed enjoying the book" – Science Lead Teacher, Hertford Vale Primary School, North Yorkshire

No Books in Lowest Income Homes

Research by the National Literacy Trust found that half a million children in the UK say that they do not have a book of their own at home. Book ownership and access to books at home can influence a variety of life outcomes, from educational attainment to income in adulthood. Children who do not own a single book are six times less likely to read at the expected level for their age. Those children in deprived households are twice as likely to say that they didn't have a book of their own at home. Anecdotally, in discussion with the Headteachers of the primary schools in Eastfield, Scarborough, it will be a 'big deal' for the children to have a book of their own.

A Pressing Need after COVID

The COVID-19 pandemic affected everyone. For children, it has exposed and exacerbated pre-existing educational inequalities, particularly literacy and wellbeing. In lower income households, parents experiencing economic hardship, job insecurity and depression were less able to support their children's learning at home. Research at Key Stage 1 found that there was a 7 month gap in reading progress between disadvantaged and non-disadvantaged pupils in the UK. Access to books played a significant role in children's learning outcomes. A wealth of studies conclude that learning loss in reading has been greater for pupils from less advantaged backgrounds, specifically the North Yorkshire Coast.

Why Eastfield, Scarborough

Scarborough continues to be the most deprived district in North Yorkshire for the Index of Multiple Deprivation. One third of children in Eastfield live in poverty, and one in three adults are unemployed. The links between poverty and low literacy in the UK are profoundly strong and intergenerational but they are not inevitable. 3,900 children in Scarborough living in households claiming out of work benefits, and Scarborough children's education falls below all benchmarks for development, reading and writing. In this country, the link between social mobility and socioeconomic status is more profound than in most other developed countries. Despite numerous centralised government strategies, this situation has persisted over the last 50 or more years, which shows that, as a nation, we are yet to address these challenges.

Children's lives from the earliest moments are shaped by where they live. Research has shown that the characteristics of the neighbourhoods where children live and the systems they encounter shape children's educational outcomes over and above the effects of social class or the overall deprivation levels of the areas, and compound existing disadvantages. Scarborough children's education falls below all benchmarks for development, reading and writing. Their lives are moulded in many places: in the classroom, the home, through friends, through culture and through the wider communities in which they live. When they leave school, more than 35% of adults in Eastfield between the ages of 16 and 70 have no academic, vocational or professional qualifications... 35%.

Based on this research, One Tree Publications has been exploring how place-based solutions could be developed to raise literacy levels in North Yorkshire. The first Nettle and Dock Love of Literacy and Libraries project is being launched in Eastfield, Scarborough, in 2023 and we invite you to support our place-based project, where we are working with the three Eastfield primary schools, the local library, the local Scouts group, the local sports clubs, and the local church with a Christian social action centre, all set in the heart of Eastfield.

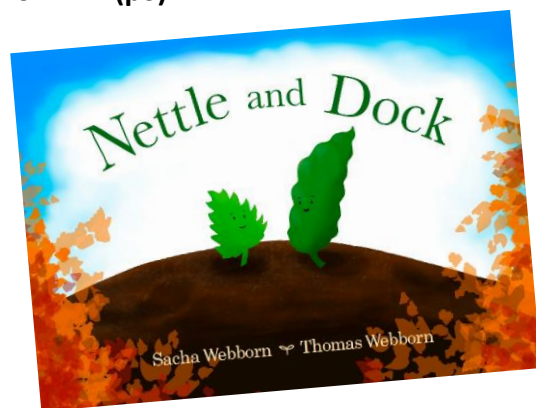
At Nettle and Dock Literacy events, children will:

- Participate in the fun Nettle and Dock habitat song, led by the author and illustrator as a vocalist and guitarist duo.
- Meet the authors and illustrators of the children's picture book Nettle and Dock and be inspired to raise their aspirations as they interact and ask Sacha and Thomas questions.
- Experience the interactive, playful, and STEM-inspired reading of Nettle and Dock, the children's picture book, led by the author, Sacha.
- Enjoy a forest school craft activity with drawing and introduction to plant identification, led by the illustrator, Thomas.
- Receive an engaging, interactive leaflet explaining the range of free resources available through Eastfield Library service, with an invitation to join the library.
- Receive their own full-colour A4 copy of the children's picture book Nettle and Dock to take home and keep and share with parents and family. Book includes wildlife identification and nature notes.

Benefits to the Local Community

This project delivers five priorities on the **New Eastfield Action Plan 2012-24 (p6)**:

- Support local community centres and activities
- Maintain and enhance the library
- Better facilities and activities for young people
- Develop more environmental education and resources
- Encouraging healthy living



Long Term Transformation

Each child receives their own full-colour A4 copy of the children's picture book Nettle and Dock to take home and keep and to share with parents again and again, so that the family's love of reading and books continues long after the event.

Free syllabus-linked environmental education and literacy resources will be available to teachers and parents through the Nettle and Dock website, providing a program of activities through the year that elaborates on the themes in the picture book. This will enable the energy of the project to be re-channelled into lessons at school and extension activities at home for years to come.

Additional Benefits Beyond Literacy

A Cleaner, Greener Eastfield - This Nettle and Dock project awakens children's curiosity and care for the environment, teaching about habitats, life cycles, and the seasons, all in a fun and engaging way.

Happier and Healthier Families - This project is a celebration! Children and families have fun participating in live music performance, making a cherished wooden craft item. The interactive book provides fun opportunities to build relationships as families read together; adults will be inspired to engage with their child's love of nature and books.

Skills and Future Employment - This Nettle and Dock project develops literacy, numeracy and STEM in children, the foundation of many professions. Events build 'science capital' by training participants in scientific observation, plant identification and habitat-creation skills, which are all at the foundation of many ecological and agricultural careers in North Yorkshire.

Thriving Community Assets - This project celebrates literacy in a range of community facilities and greenspaces and will encourage people to be active agents of change. Children will be encouraged to deepen their love of books by visiting Eastfield Library, which may also help the library recruit more volunteers - currently a key factor in its opening hours and role as community hub.

Raising Aspirations and Life Chances - Nettle and Dock is an inspirational guide to using imagination outdoors and identifying wildlife, good for long term wellbeing and better mental health, and giving children more confidence to interact with outdoor spaces on their doorstep. Nettle and Dock introduces themes of friendship, overcoming difficulty, showing courage and resilience, and understanding that even our differences can bring strength to a community.

These events help children and families raise their aspirations by meeting an author and illustrator, overcoming reading challenges which ultimately provides them with a stronger foundation for lifelong learning, making healthier choices, and becoming citizens invested in their own community.

Planned Events across Eastfield, Scarborough	Timing
Loders Green with Eastfield Scouts	Sunday 3 rd September confirmed
Bankside Park with Westway Boxing Club	October Half-term Holiday t.b.c.
Playingfields with Eastway Sport and Social Club	October Half-term Holiday t.b.c.
Westway Open Arms Community Centre	Saturday in November t.b.c.
Eastfield Community Library	Saturday in December t.b.c.
Overdale Community Primary School	Midweek Autumn Term t.b.c.
St George's R.C. Primary School	Midweek Autumn Term t.b.c.
Braeburn Primary and Nursery Academy	Midweek Autumn Term t.b.c.
Eastfield Scouts Hut	Saturday 11 th November confirmed

What the People of Eastfield Say:

Mr Jolly, Headteacher of Braeburn Primary and Nursery Academy

"We would really like the children to have the Nettle and Dock event please".

Pauline Caulfield, Trustee for Eastfield Community Library

"The Trustees would like to support this project".

Linda Pennock, Secretary for Eastfield Scouts Group

"We would be pleased for a Nettle and Dock event on Sunday 3rd September."

Dave Atkinson, Manager of Eastway Sport and Social Club

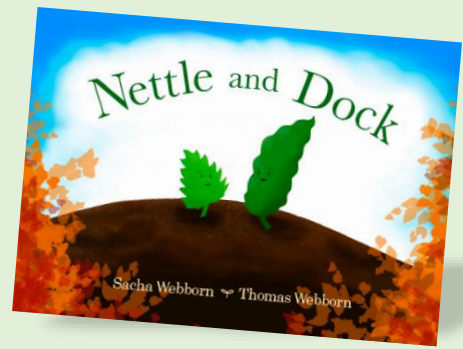
"We support owt for the kids."

Mrs Logan, Headteacher of Overdale Community Primary School

"We would love to be part of the Nettle and Dock event!"

Mr Krlic, Headteacher of St George's R.C. Primary School

"This sounds good. The staff are really keen to join the event. It's a big deal for some of our children to have their own book to take home."



Ryan Ashworth Manager of Westway Boxing Club

"This sounds really good, I'm all for community activities like this."

Bernie Brown, Centre Manager of Westway Open Arms and Holy Nativity Church

"Please come and use the hall, we will provide refreshments, and can invite the Senses group, Little Lambs, and the Youth Club."

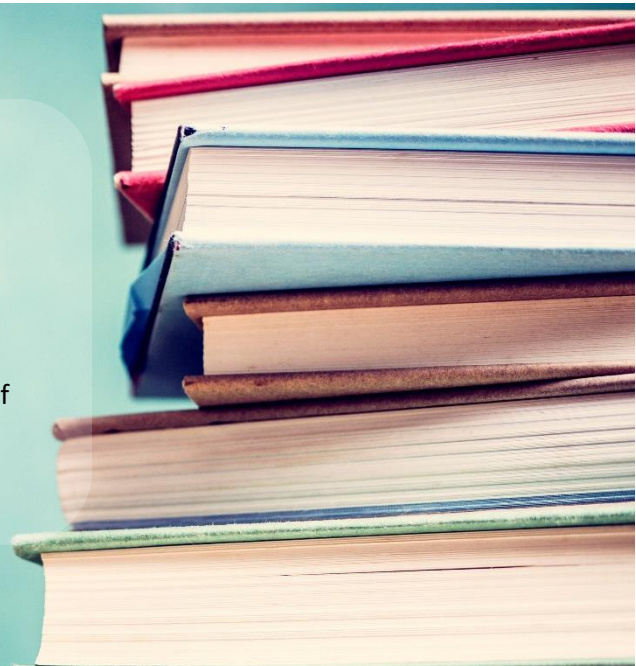
Louise Morgan, Community Regeneration Officer for Eastfield, North Yorkshire Council

"It is wonderful news that you will still be continuing with your Nettle & Dock project with key partners in Eastfield."

Your Support

We need your help to continue our work boosting the literacy skills of children and young people living in the UK's most economically disadvantaged communities, giving them the best possible chance of success in school and work.

With your support using GoFundMe, we can get books into the hands of the children who need it most. Together we can help children build the literacy skills they need to succeed in the future.



£250 pays for a Nettle and Dock Literacy event for a class of **30** children, each receiving a book of their own and participating in live music performance, a live reading of the book, and meeting the author and illustrator in person to ask questions.

£1250 pays for a Nettle and Dock Literacy event for a **whole school**, reaching **150** pupils in Years 1, 2 and 3. Each child receives a book of their own and participates in live music performance, a live reading of the book, and meets the author and illustrator in person to ask questions.

£5,000 pays for a Nettle and Dock Literacy project for the **whole community** of Eastfield, that's **600** children and their families at ten venues across the town. Each child receives a book of their own and participates in live music performance, a live reading of the book, and meets the author and illustrator in person to ask questions. We would also arrange to deliver an event at a school or venue of your choice in North Yorkshire, bringing the Nettle and Dock Literacy Project to another area close to your heart.

Every donation of **£50** or more will receive their own copy of Nettle and Dock signed by the author and illustrator.



Our Purpose and Aims

One Tree is a husband-and-wife, author-and-illustrator, musician and educator team with aims to benefit the community: to teach children practical life skills and improve literacy levels and promote a love of books, to inspire with the arts, and to increase community engagement in their children's aspirations and lifelong learning.

Value for Money

Nettle and Dock is designed to last: a large, high-quality, full colour softback book with soft-touch laminate cover, published and printed in the UK to FSC standards.

All equipment for the live music performance (amplification, microphones, instruments, etc) will be provided free of charge by One Tree Music. They currently live locally so are not charging for travel expenses.

The team delivering this project are uniquely positioned to deliver successful events in collaboration with diverse organisations. Highly qualified with Bachelor's degrees in English Literature, Evolutionary Biology, Masters in English Education, Postgraduate diploma in Outdoor Education, and Level 3 Forest School Leader, they have co-ordinated and run educational events for a combined 20 years around the world.

In the long term, where children's literacy is improved, so too are their lifelong wellbeing and economic prospects.